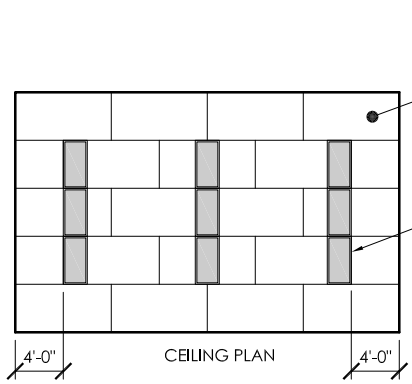
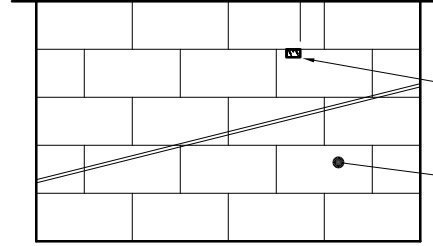
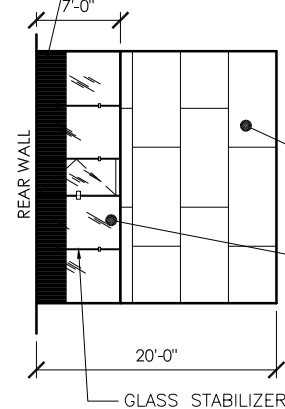
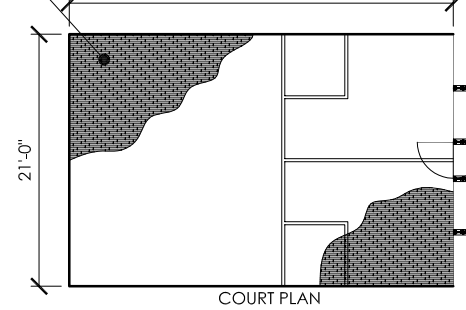
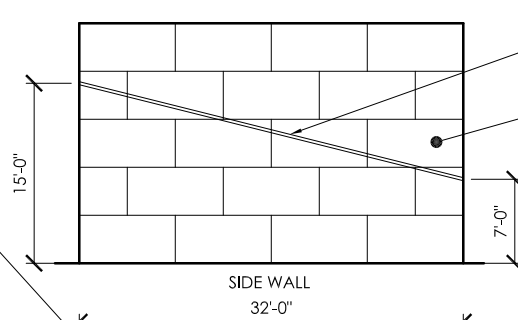
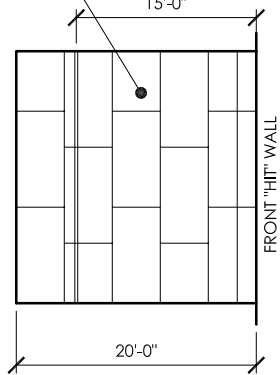


25/32" MFMA MAPLE FLOORING ON PADDED SLEEPERS - TOTAL FLOOR HEIGHT: 2-5/8"

1-1/8" T&G FRONT WALL PANELS



2" WIDE COURT MARKINGS (TYP)

1-1/8" T&G SIDE WALL PANELS

12" WIDE GLASS STABILIZER FIN SUPPORTS

30" WHITE CERAMIC FRIT LINES - 1/8" THICK @ 1" O.C.

REAR WALL

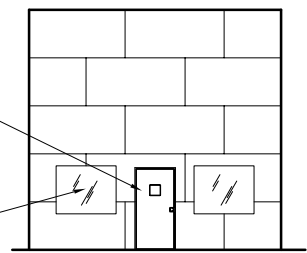
GOODY BOX

1-1/8" T&G SIDE WALL PANELS

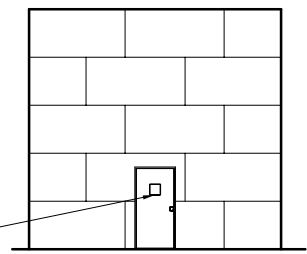
5/8" T&G CEILING PANELS

2' x 4' FLUORESCENT LIGHT FIXTURES

**OPTIONAL REAR WALL CONFIGURATIONS**



**OPTION 1**



**OPTION 2**

3' x 7' SOLID CORE DOOR (OR OPTIONAL GLASS)

5' x 4' VIEWING WINDOW W/ 1/2" TEMP GLASS

1-1/8" T&G REAR WALL PANELS

OPTIONAL: 1/2" THICK TEMPERED GLASS WALL SYSTEM (CUSTOM SIZES AVAILABLE)

3' x 7' SOLID CORE DOOR (OR OPTIONAL GLASS)

**NOTES:**

1. REFER TO CONDITIONS & RESPONSIBILITIES OF OWNER/GENERAL CONTRACTOR.
2. ALL FINISHES OUTSIDE THE COURT(S) BY OTHERS.
3. ALL FRAMING BY OTHERS (UNLESS OTHERWISE INDICATED)

**Allied Products, LLC**  
 P.O. BOX 1431  
 SHERWOOD, OR 97140  
 PH: (503) 625-3746  
 FAX: (503) 625-3748  
 TOLL FREE: 1 (800) 864-1272  
 www.alliedproductsllc.com

Project  
**SQUASH COURT PANEL CONFIGURATION**

Date JULY 2009	Drawing No. <b>52L</b>	Sheet <b>1</b>
Scale NOT TO SCALE		