

PLAYGUARD[®]

S A F E T Y S U R F A C I N G

Allied  Products, LLC

RACQUETBALL / SQUASH COURTS ✦ SPORTS & FITNESS FLOORING

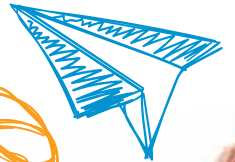
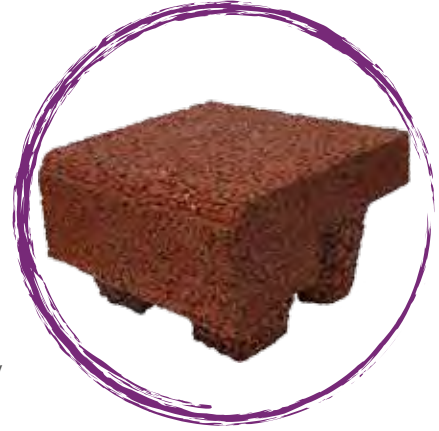


**THE ONLY 15 YEAR
WARRANTY
IN THE INDUSTRY**
INCLUDES
IMPACT ATTENUATION
TO ASTM F1292



Characteristics

- 24" x 24" modular tiles that are 2.5" thick
- Factory molded to ensure consistent fall height protection and uniform appearance
- Patented, pre-manufactured colorful Ultra wear layer (2.5")
- Meets 6' and 10' critical fall height requirements per ASTM F1292-13 and is CPSC compliant
- Turf Tile meets 5' and 11' critical fall height
- Slip resistant for wet or dry surfaces
- Resilient, comfortable surface encourages play
- Tiles won't crack, eliminating unsightly surface repairs
- Will not shift or displace during play
- Meets ADA standards
- Extremely durable for low life-cycle costs
- Easy to clean, low-maintenance surface
- Unlikely to conceal sharp or potentially harmful objects
- Individual tiles can be removed and replaced if damaged
- Made in the U.S.A. from the highest quality recycled rubber
- 15 year warranty on Carnival Ultra
10 year warranty on Softpave
Pigmented & Non Pigmented
5 Year Warranty on Turf Tile



Applications

- Playgrounds
- Rooftops
- Patios
- Recreation spaces
- Daycare & after-school activity grounds
- Rehabilitation centers
- Schools



Sustainability

Creating Sustainable Environments

The largest user of scrap tire rubber in the U.S.A., converting more than 65 million pounds of tires annually into recycled rubber flooring.



Floor Score

Indoor PlayGuard applications are FloorScore certified for compliance with rigorous indoor air quality emission requirements.



CHPS

PlayGuard meets the Collaborative for High Performance Schools (CHPS) criteria, the state of Washington standard for indoor air quality, and supports ASTM 2129-05 Sustainability Assessment.



LEED

PlayGuard can contribute toward earning up to 8 LEED points. For information on how PlayGuard can contribute to LEED points please visit PlayGuardSurfacing.com.



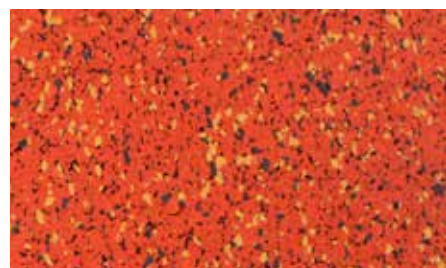
Carnival Ultra



Midnight PG50



Rock Candy 2 PG65A

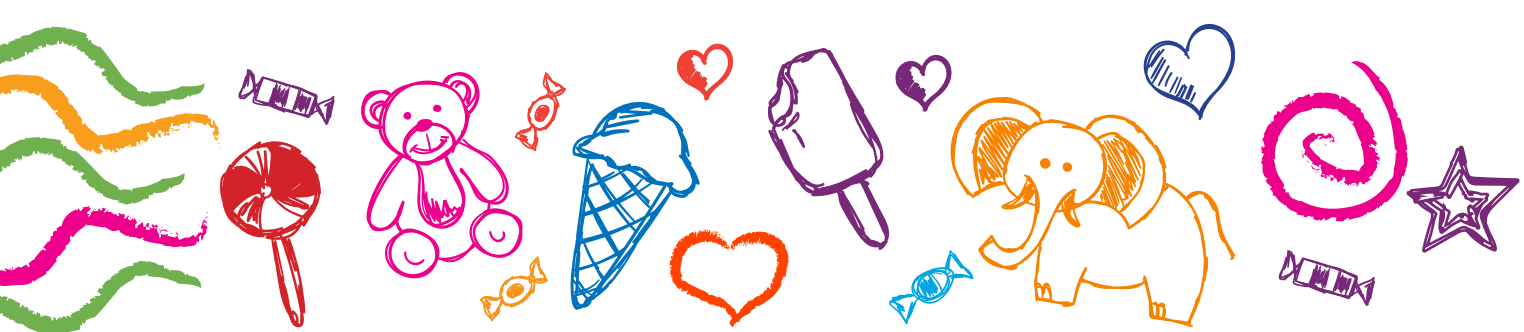


Orangesicle PG77

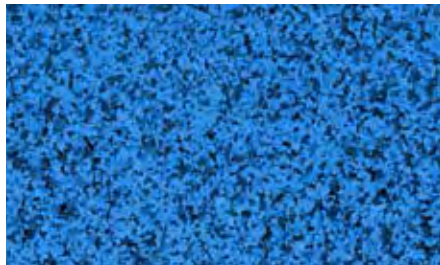


Used in combination or as single color accents, the wear layer colors of the Carnival Ultra line create bright and engaging atmospheres that beg for participation and activity. This collection's vivid patterns bring design themes to life and transform playgrounds into lively community attractions. Carnival Ultra tiles are manufactured with proprietary processes that mold a dense recycled rubber and EPDM wear layer, which is 3mm thick, to a footed recycled rubber base.

*Actual sample and final product may vary from color swatches shown in this catalog.



Cherry Blast 2 PG61A



Blueberry Pie 2 PG62A



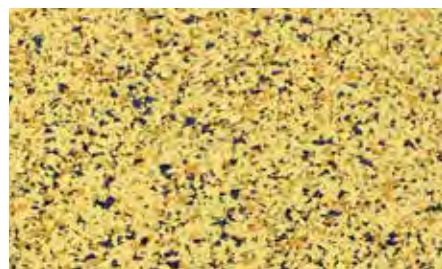
Sour Apple 2 PG63A



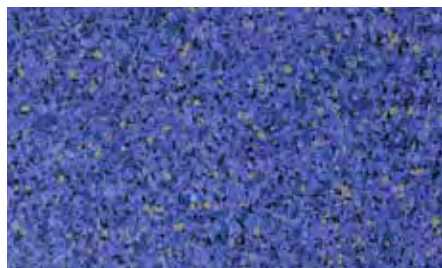
Caramel Corn 2 PG66A



Funnel Cake 2 PG67A



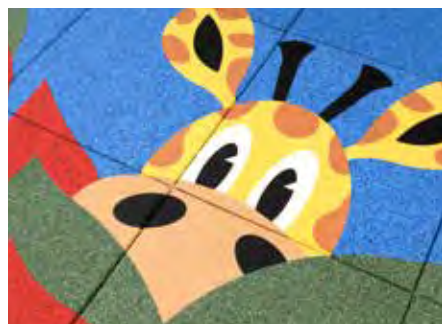
Lemonade PG76



Grape Slushie PG78



Licorice PG79



Specifications

Tile: 24" x 24"
Thickness: 2.5"
Tile + Polyfoam (2-1/8"): 4.625"

Recommended Accessory Colors

PG40A



Rooftops & Patios



PlayGuard Safety Surfacing is ideal for rooftop and patio applications due to its unique Quad Blok installation system and cushioned resilience. With the Quad Blok system, PlayGuard tiles are attached to the connector and not the roof itself. This eliminates costly damage to elastomeric membranes and ensures that the quality of the roof remains unaltered. ColorMill® EPDM allows for greater UV fade resistance compared to other EPDM rooftop and patio applications.

PlayGuard tiles also allow for water drainage. The superior design of PlayGuard, in combination with the connector system, ensures that water will quickly reach the roof surface and flow to drains, avoiding ponding and enabling easy maintenance. The tiles' superior durability and non-slip properties make them ideal for areas prone to direct exposure to the natural elements and, with the Quad Blok installation system, damaged tiles can be easily removed or replaced.



Turf Tile



Turf Tile is a resilient surface ideal for both indoor and outdoor applications on playgrounds and rooftops. Combined with the Quad Blok system, it eliminates costly damage to elastomeric membranes and ensures that the quality of the roof remains unaltered.

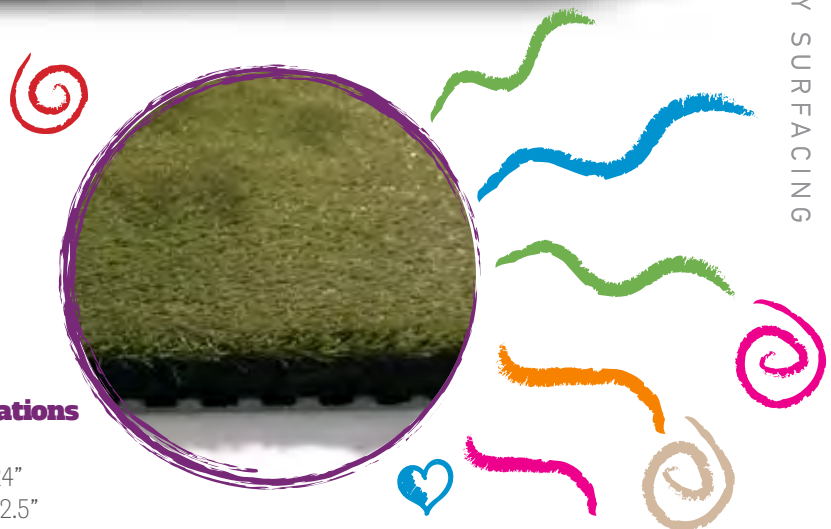
Benefits:

- No water required. Unlike real grass systems that require an irrigation system & regular maintenance
- Quick & simple to install

Available in green only.

Specifications

Tile: 24" x 24"
Thickness: 2.5"



Actual sample and final product may vary from color swatches shown in this catalog.

Softpave



If color isn't a primary consideration, budgets are tight, or simplistic design is the focus, Softpave Pigmented & Non-Pigmented tiles are the ideal solution! Manufactured without an EPDM wear layer, the earth-tone hues of the Softpave Pigmented collection are produced by evenly distributing pigment throughout the rubber tile.

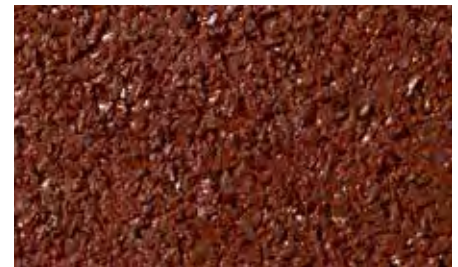
Custom color and logo options are not available for Softpave Pigmented & Non-Pigmented tiles.



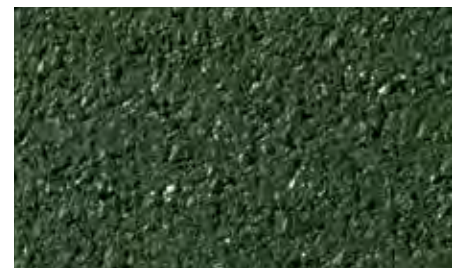
Black PG40 (Non-Pigmented)



Grey PG41



Red PG42



Green PG43

* Softpave Pigmented & Non-Pigmented tiles are **not** recommended for indoor use.



Specifications

Tile: 24" x 24"
Thickness: 2.5"
Tile + Polyfoam (2-1/8"): 4.625"

Recommended Accessory Colors

PG40A PG41A PG42A PG43A

Quad Blok™



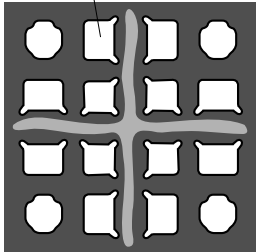
Ideal for playgrounds, rooftops, and patios, our exclusive Quad Blok™ system offers reliable easy-down/easy-up installations. Quad Blok connectors are made of high quality, post-consumer tire rubber and polyurethane. Unlike labor intensive poured-in-place systems, Quad Blok modular connectors feature precisely located multiple openings that interface with the corner leg understructure of PlayGuard tiles. These connectors are quick and easy to use without adhering to or causing damage to rooftops or playground substrates. If an individual tile ever does need replacement, removing and securing a new tile causes minimal disruption or downtime.

Benefit:

Quad Blok prevents gaping and/or separation of the tiles, due to temperature fluctuation.



Tile legs mate to cutout



QuadBlok for 2.5" Tile

NOTE: ONE QUAD BLOK PER TILE IS REQUIRED

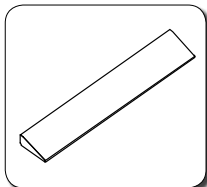
Property	Test Method	Typical Result
Density	ASTM D297	45-lbs./cu.ft. ³ min.
Tensile Strength	ASTM D412, DIE C	100psi. min.
Elongation	ASTM D412, DIE C	65% min.
Compression	ASTM F36	Recovery
@50psi	15%	80%
@100psi	28%	90%
@200psi	45%	95%
Shore A Hardness	ASTM D2240	50 +/- 5 points
Tear Strength	ADTM D624, DIE C	30-lbs.f/in
Flexibility	ASTM F147	0-1 Factor
Compression Set B 25% deflection, 22 hrs. 158°F	ASTM D395	25%
Compression Set (Foam) 50% deflection, 22 hrs. 158°F	ASTM D3676	20%

Features:

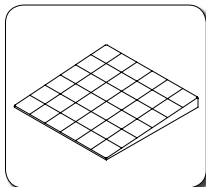
- Available in:
 - 8" x 8" x 17mm for 2.5" Tiles
- 15 year warranty
- Recycled rubber and polyurethane composition
- Highly durable
- Enables rooftop installation capabilities
- Eliminates damage to the roofing membrane
- Allows rapid water drainage around each tile
- Ample void under tiles for water drainage flow

Accessories

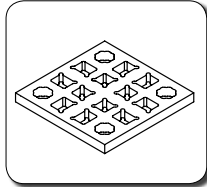
Carnival Ultra, Softpave Pigmented & Non Pigmented & Turf Tile



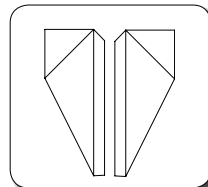
Reducer
48" x 8" x 2-1/2"
48" x 12" x 4-1/2"



ADA Access Ramp
24" x 30" x 2-1/2" (2)
19-3/4" x 60" x 4-1/2" (2)



Quad Blok Connector
8" x 8" x 17 mm



L/R Side Reducer for ADA Access Ramp
24" x 8" x 2-1/2"
48" x 12" x 4-1/2"

***Not Available in Grey**

Accessories are not manufactured with a wear layer. The pigments are homogeneously mixed throughout to produce coordinated designs that compliment the Carnival Ultra line and correspond with Softpave.



Technical Specifications

Critical Fall Height and Physical Dimensions					
Thickness	Weight (lbs.) Each (Not less than)		Critical Fall Height (ft.)		
	Softpave Pigmented & Non-Pigmented	Carnival/ Turf Tile	Softpave Pigmented & Non-Pigmented	Carnival	Turf Tile
2-1/2"	25	27	6	6	5
2-1/2 & 2-1/8" Polyfoam	29	31	10	10	11

Packaging Information				
Full Pallet Weight (lbs.)				
Thickness	Pieces/Pallet	Softpave Pigmented & Non-Pigmented	Carnival/Turf Tile	Pallet Height
2-1/2"	100	2,560	2,760	66"
2-1/8" x 4' x 6' (Polyfoam Sheet)	23	680	680	52"

Physical Testing - Typical Results			
Characteristic	Test Method	Softpave Pigmented & Non-Pigmented Tile	Carnival
Density*	ASTM D297	58 lb./ft ³	80 lb./ft ³
Tensile Strength*	ASTM D412, DIE C	180 lb./in ²	250 lb./in ²
Elongation at Break*	ASTM D412, DIE C	50%	70%
Abrasion Test*	ASTM D3389	Less than 0.200g lost	Less than 0.200g lost
Coefficient of Friction*	ASTM D2047	0.8	0.8
Flammability	ASTM D2859 (Burning Pill Test)	8 of 8 samples passed	8 of 8 samples passed
Wheel Chair Accessibility	ASTM F1951-08	Pass	Pass
Lead Content	US EPA Method 3052:1996	Pass	Pass

*testing on wear layer surface only

FIFTEEN YEAR* LIMITED WARRANTY INFORMATION - Materials, Workmanship, and Performance	
Number of years from date of original installation to date of claim	Percentage of product purchase price found to be defective or non-compliant
0-6	100%
More than 6, but less than 7	60%
More than 7, but less than 8	40%
More than 8, but less than 9	30%
More than 9, but less than 10	20%
More than 10, but less than 12	10%
More than 12, but less than 15	5%