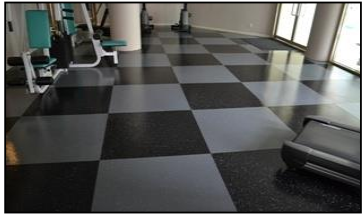


## ReAction Technical Data



### ReAction

Engineered for durability and versatility, ReAction performs well under the abuse of weights, skates, cleats, and other heavy equipment. Surface finish does not require waxes or finishes.



### Special Order:

Top Wear Layer 3mm  
 Custom logo  
 All thicknesses with \*

### Finishes:

Matte only

Technical Specifications		
Hardness Shore A	ASTM D2240	80 ± 5
Compression Set	ASTM D395	0.0993
Coefficient of Friction	ASTM D2047	dry > 0.8
Static Coefficient of Friction	ASTM C-1028	> 1.0 Wet / Dry
Tensile Strength	ASTM D412	Top >1000psi / Bot >350psi
Elongation at Break	ASTM D412	Top >300% / Bot >200%
Tear Strength	ASTM D624	>25kN/m
Static Load Limit	ASTM F970-00	Passes
Moisture Absorption	ASTM D570	0.0037
Critical Radiant Flux	ASTM E648-03, NFPA253	Class I > 0.45 watts/cm <sup>2</sup>
Resistance to Heat	ASTM F-1514	Passes
Optical Density of Smoke	ASTM E662	Class 1 < 450
Resistance to Chemicals	ASTM F-925	Passes
Wear Layer Thickness	ASTM F-140	Passes
Abrasion Resistance	ASTM D-3389	Passes
Dimensional Stability	ASTM F-2199	Passes
VOC Compliance	CA 01350	Yes
Thickness	ASTM F386	Passes
Size	ASTM F2055	Passes
Squareness	ASTM F2055	Passes
Quality of Cut	ASTM F511	Passes
Color Stability		Good
Light Reflection		Average
Contributes to LEED Points		Yes
Anti-microbial/Anti-fungal Properties		Yes

Size Specifications				
<b>Construction:</b>		Dual-layer Vulcanized Rubber		
<b>Wear Surface:</b>		Color Virgin Blend Rubber		
<b>Base Layer:</b>		55% Recycled Rubber		
	Thickness	Dimension	Weight	Area
Rolls	* 3.5mm	4' x 50' (±1.22m x 15.24m)	0.9 lb./sq.ft.	200 sq.ft. or 18.59 sq.m
	* 6mm		1.8 lb./sq.ft.	
	* 8mm	4' x 30' (±1.22m x 9.15m)	2.4 lb./sq.ft.	120 sq.ft. or 11.16 sq.m
	* 10mm		3.2 lb./sq.ft.	
Tiles	* 3.5mm	1m x 1m	16 lbs.	10.75 sq. ft.
	* 6mm		23 lbs.	
	* 8mm		30 lbs.	
	* 10mm		38 lbs.	
	10mm interlock	0.945 m x 0.945 m	31 lbs.	9.6 sq.ft.

Standard Colors			
			
			

**Colors:** Rhino, Brick, Charcoal, Cobalt, Steel, Shamrock, Beach, Putty

*Colors shown are only indicative, as true color reproduction is not possible  
 Colors will be matched to within ± one tone on the pantone chart*