

**Stamina**

100% recycled vulcanized flooring that can be adhered, loose laid, or interlocked. The non-porous surface makes it an ideal flooring product for use in hockey arenas, free weight/fitness facilities or anywhere that a tough, slip-resistant, easy-to-clean floor is required.



Custom logo cutting available

**Technical Specifications**

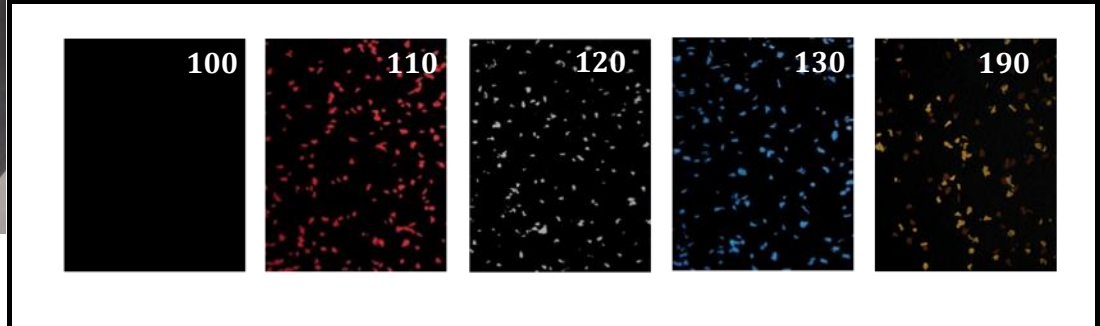
Hardness Shore A	ASTM D2240	75+/-5
Wear Layer Thickness	ASTM F410	>.050 (Passes)
Static Load Resistance	ASTM F970	0.002 (Passes)
Resistance to Chemicals	ASTM F925	Good
Resistance to Heat	ASTM F1514	4.29 (Passes)
Abrasion Resistance	ASTM D3389	< 0.5 grams loss
Dimensional Stability	ASTM F2199	0.12 (Passes)
Critical Radiant Flux	ASTM E648-03	Class II
Co-efficient of Friction	ASTM C1028	>.80 dry >.64 wet
Moisture Absorption	ASTM D570	0.27%
Thickness	ASTM F386	Avg Passes .002
Size	ASTM F2055	Avg Passes .004
Squareness	ASTM F2055	Avg Passes .003
Quality of Cut	ASTM F511	Avg Passes .003
Qualifies for LEED Points		Yes
Anti-microbial/Anti-fungal Properties		Yes

**Size Specifications**

Construction - 100% recycled vulcanized rubber						
Thickness	Square			Interlock		
	Dimension	Weight	Area	Dimension	Weight	Area
10mm (3/8")	48" x 72"	60 lbs.	24 sq.ft.	44.3" x 66.5"	56 lbs.	20.46 sq. ft.
				22.2" x 22.2"	9 lbs.	3.42 sq. ft.
12mm (1/2")	48" x 72"	70 lbs.	24 sq.ft.	44.3" x 66.5"	66 lbs.	20.46 sq. ft.
17mm* (3/4")	48" x 72"	100 lbs.	24 sq.ft.	44.3" x 66.5"	86 lbs.	20.46 sq. ft.

\* black only

**Standard Colors**



**Colors:** 100 Black 110 Black with Red speckle 120 Black with Grey speckle 130 Black with Blue speckle 190 Black with Earth speckle  
 Custom colors are available by special order

**Finishes:** Smooth top, textured bottom