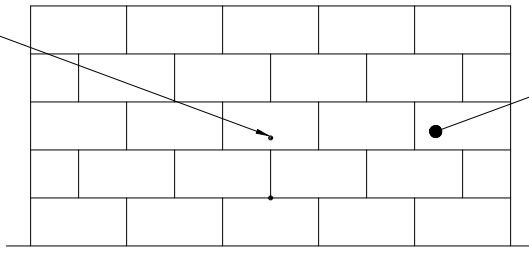
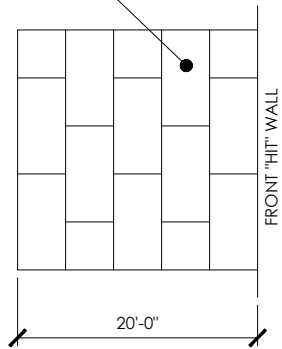


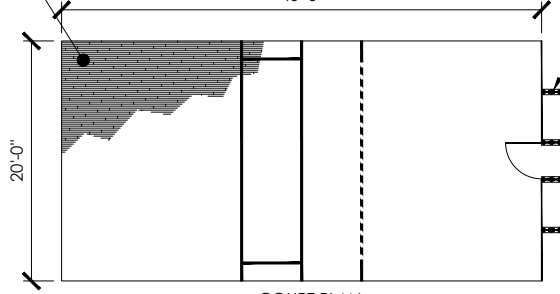
OPTIONAL WALLEYBALL
INSERTS

25/32" SOLID MAPLE
FLOORING ON SLEEPERS
- TOTAL FLOOR HEIGHT:
2-5/8"

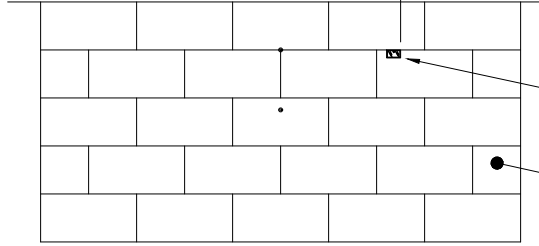
1-1/8" T&G FRONT WALL
PANELS



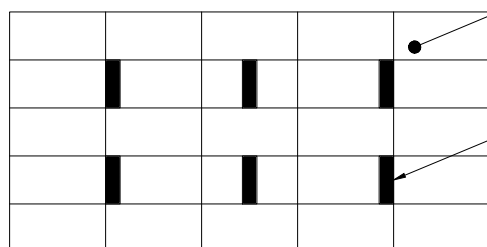
SIDE WALL
40'-0"



COURT PLAN



SIDE WALL

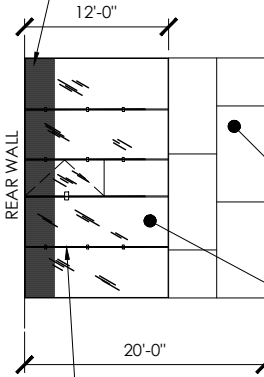


CEILING PLAN

7/8" T&G SIDE WALL
PANELS

12" WIDE GLASS
STABILIZER FIN SUPPORTS

OPTIONAL 30" WHITE CERAMIC
FRIT LINES - 1/8" THICK @
1" O.C.



REAR WALL

GLASS STABILIZER FINNS

3' x 7' SOLID
CORE DOOR (OR
OPTIONAL GLASS)

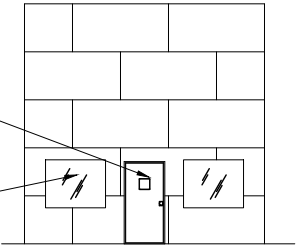
5' x 4' VIEWING
WINDOW W/ 1/2"
TEMP GLASS

7/8" T&G REAR WALL
PANELS

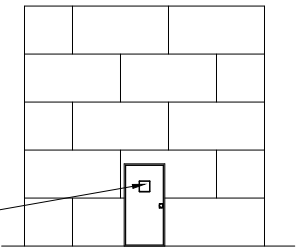
OPTIONAL:
1/2" THICK TEMPERED
GLASS WALL SYSTEM
(CUSTOM SIZES
AVAILABLE)

3' x 7' SOLID
CORE DOOR (OR
OPTIONAL GLASS)

OPTIONAL REAR WALL
CONFIGURATIONS



OPTION 1



OPTION 2

GOODY BOX

7/8" T&G SIDE WALL
PANELS

5/8" T&G CEILING
PANELS

(6) 14.5"x48" LED LIGHT
FIXTURES

NOTES:

1. REFER TO CONDITIONS &
RESPONSIBILITIES OF OWNER/GENERAL
CONTRACTOR.

2. ALL FINISHES OUTSIDE THE
COURT(S) BY OTHERS.

3. ALL FRAMING BY OTHERS (UNLESS
OTHERWISE INDICATED)

Allied Products, LLC

P.O. BOX 1431
SHERWOOD, OR 97140
PH: (503) 625-3746
FAX: (503) 625-3748
TOLL FREE: 1 (800) 864-1272
www.alliedproductsllc.com

Project
RAQUETBALL COURT PANEL
CONFIGURATION

Date 01-25-17 Drawing No: 51 Sheet

Scale
NOT TO SCALE

1